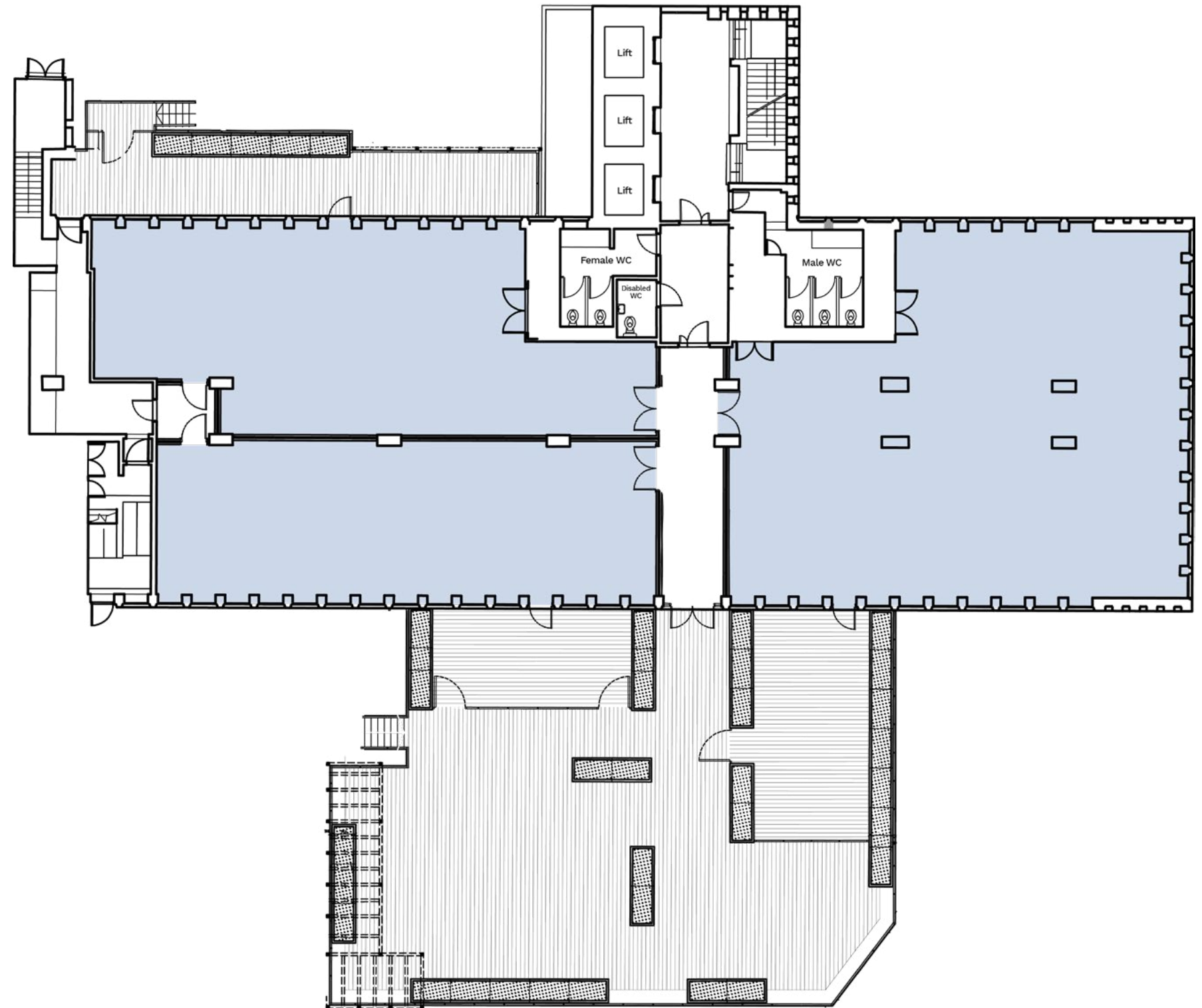
A long, empty hallway with a polished floor and a grid of columns, with a black text box overlaid in the center. The hallway is brightly lit, and the floor reflects the light. The columns are arranged in a regular grid, and the ceiling has a grid pattern. The text 'ONE TEMPLE ROW' is written in white capital letters on the black box.

ONE
TEMPLE
ROW

Floorplans

3rd Floor

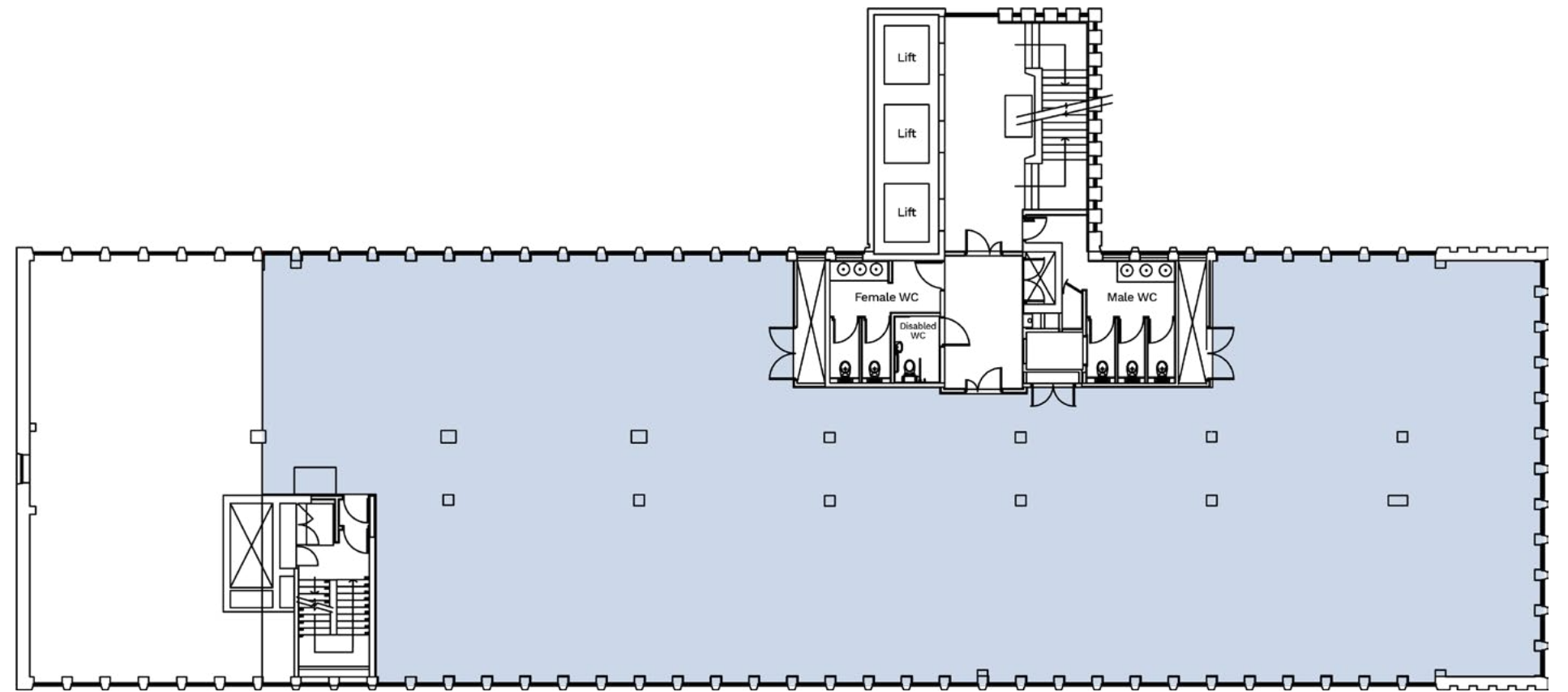
FLOOR	AVAILABILITY
3	LET



5th Floor

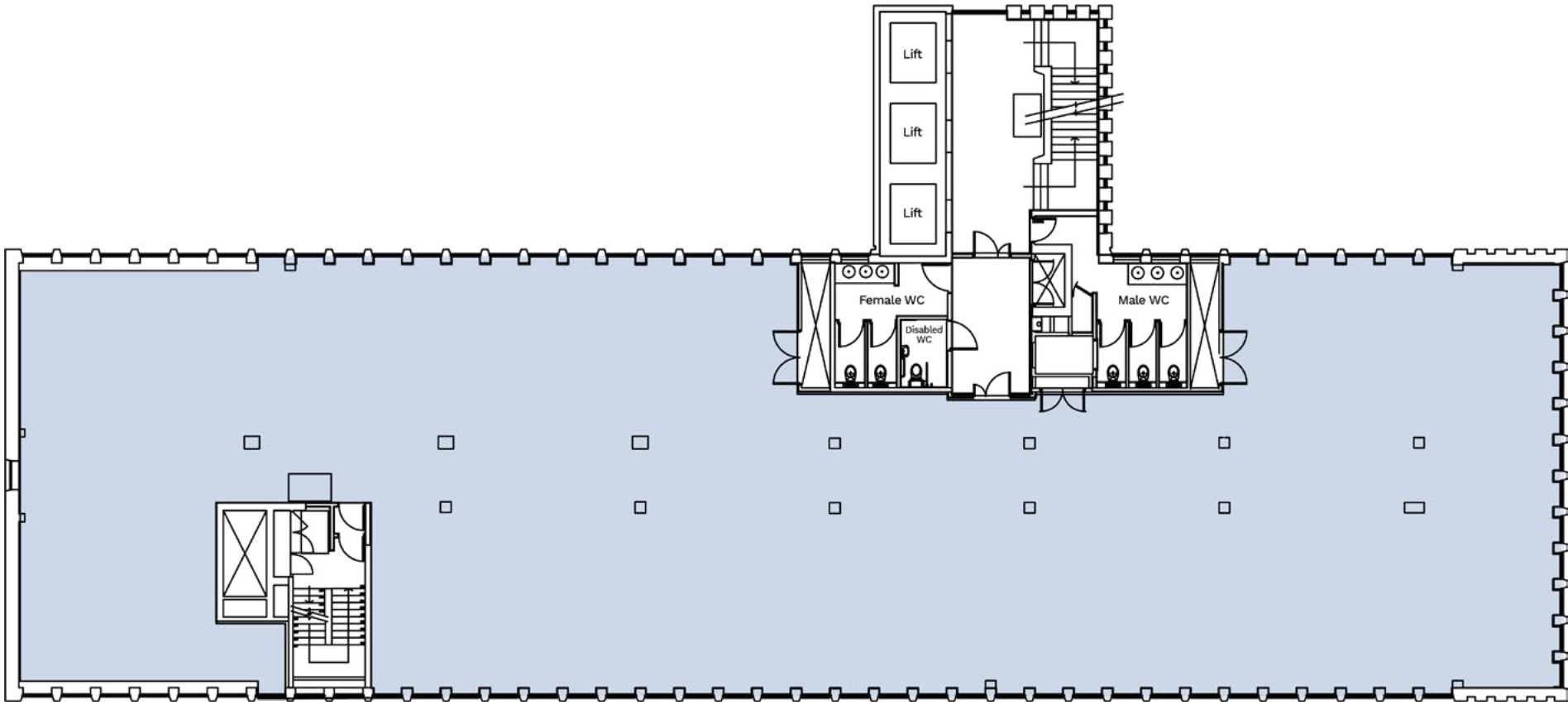
FLOOR AVAILABILITY

5 LET



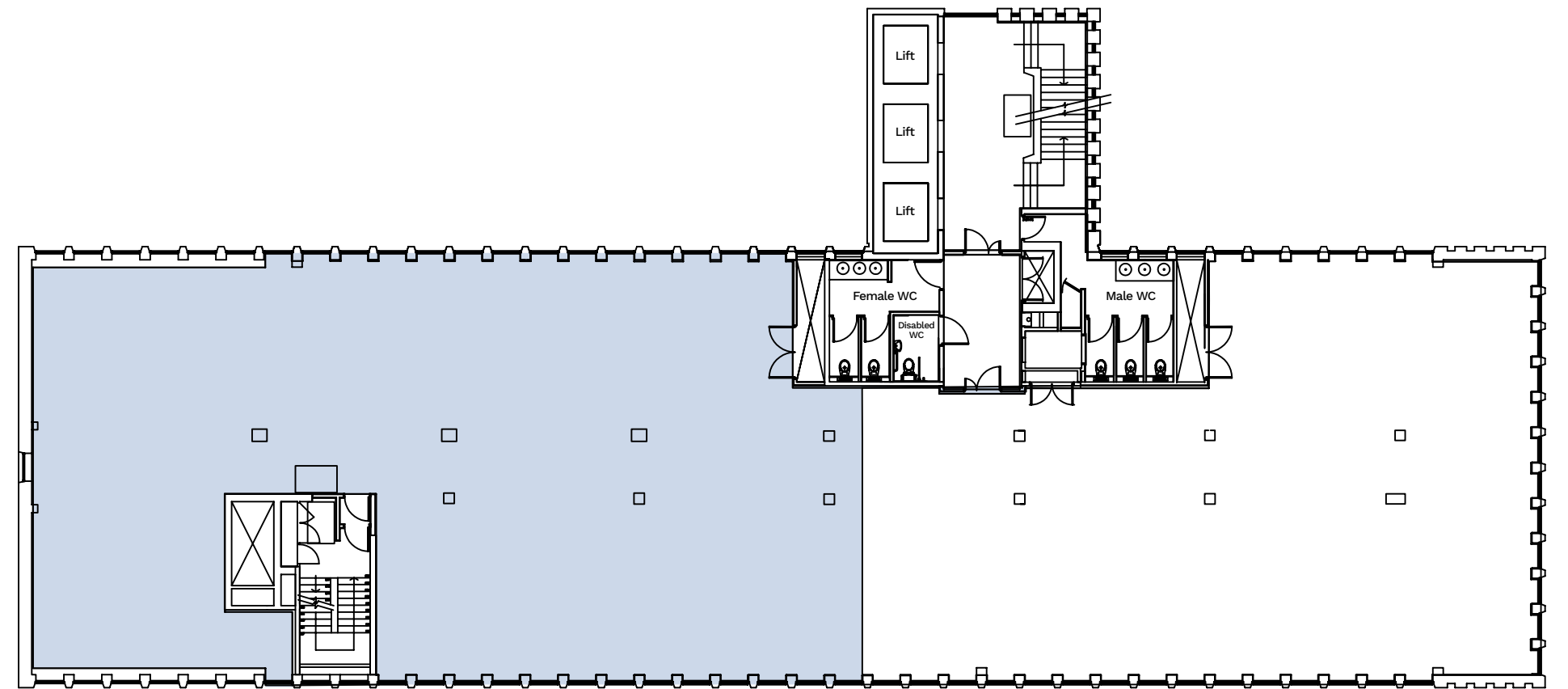
7th Floor

FLOOR	AVAILABILITY
7	6,750 sqft 627 sqm



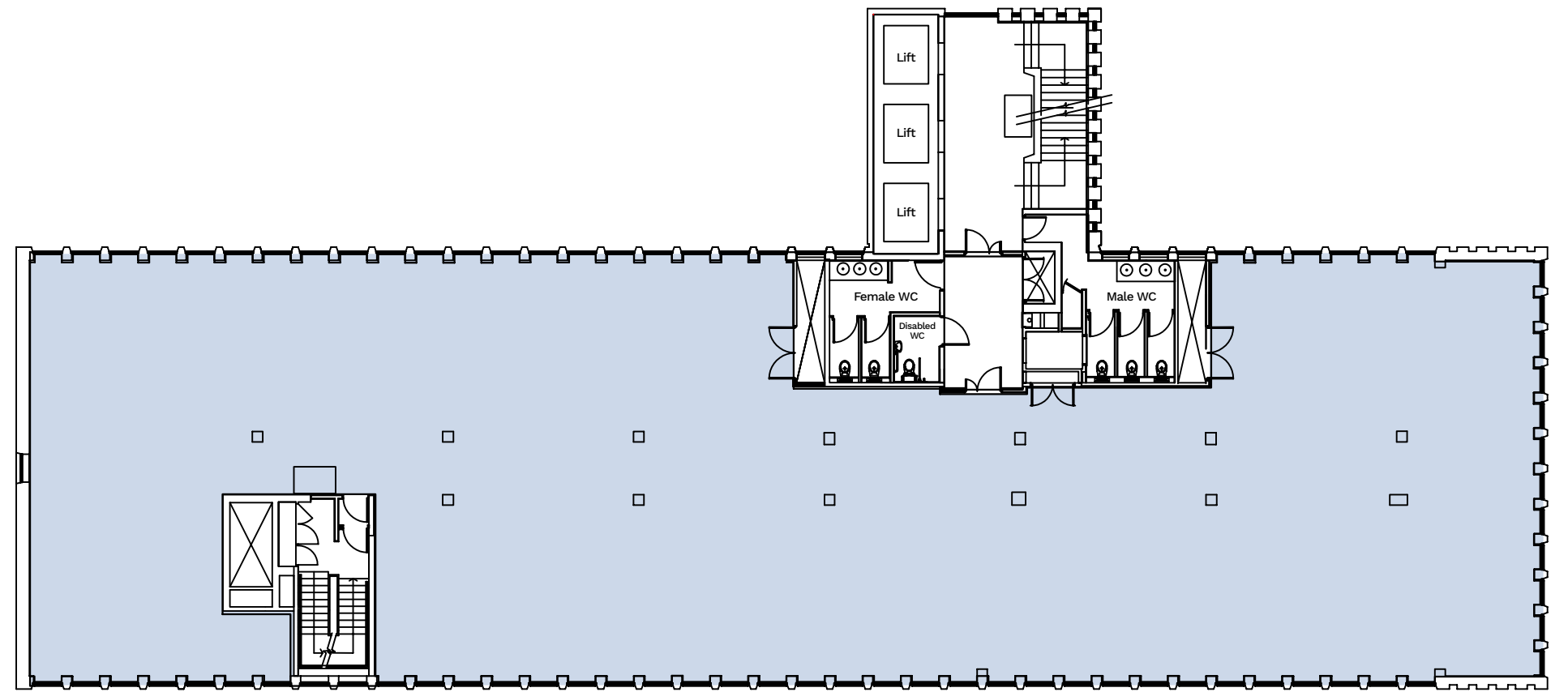
8th Floor

FLOOR	AVAILABILITY
8 (part)	2,714 sqft 252 sqm



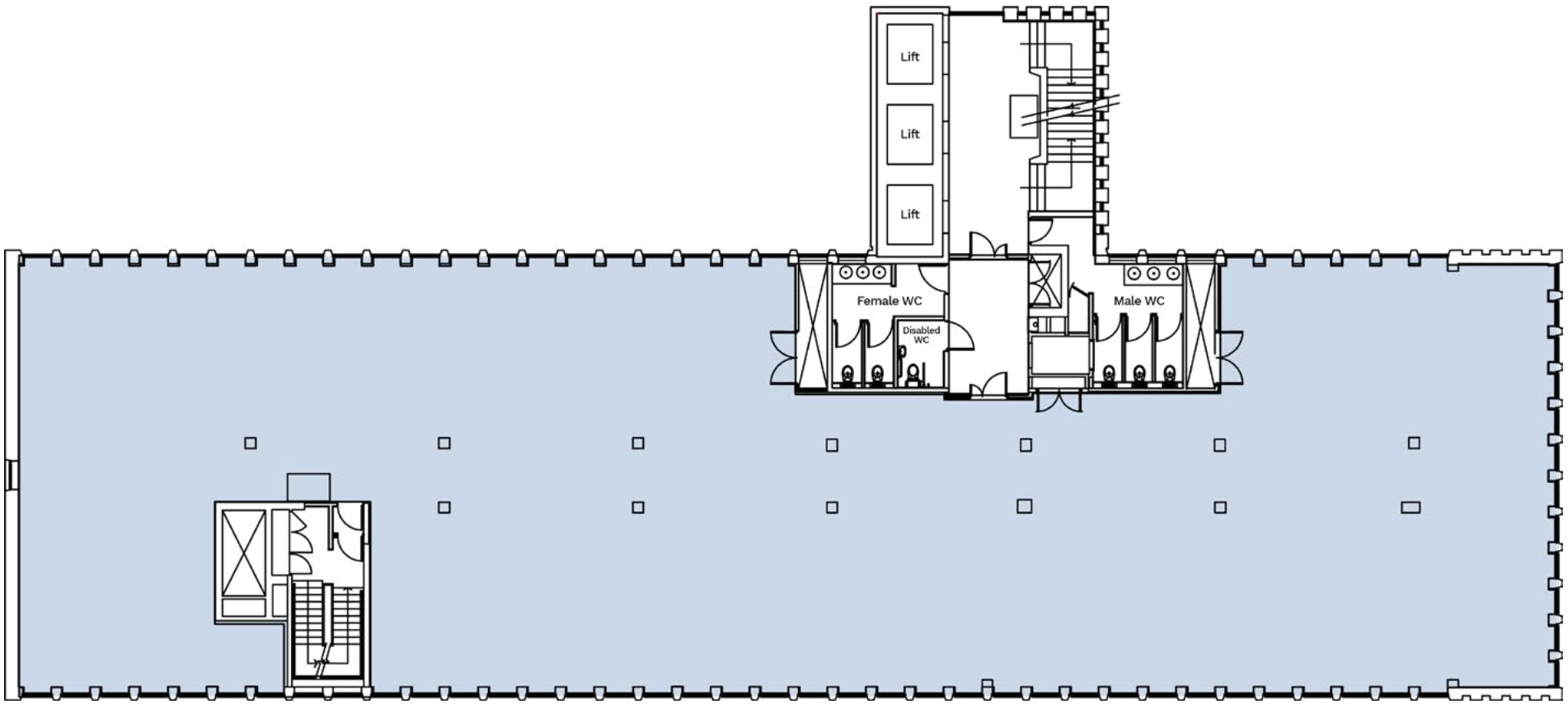
9th Floor

FLOOR	AVAILABILITY
9	6,845 sqft 636 sqm



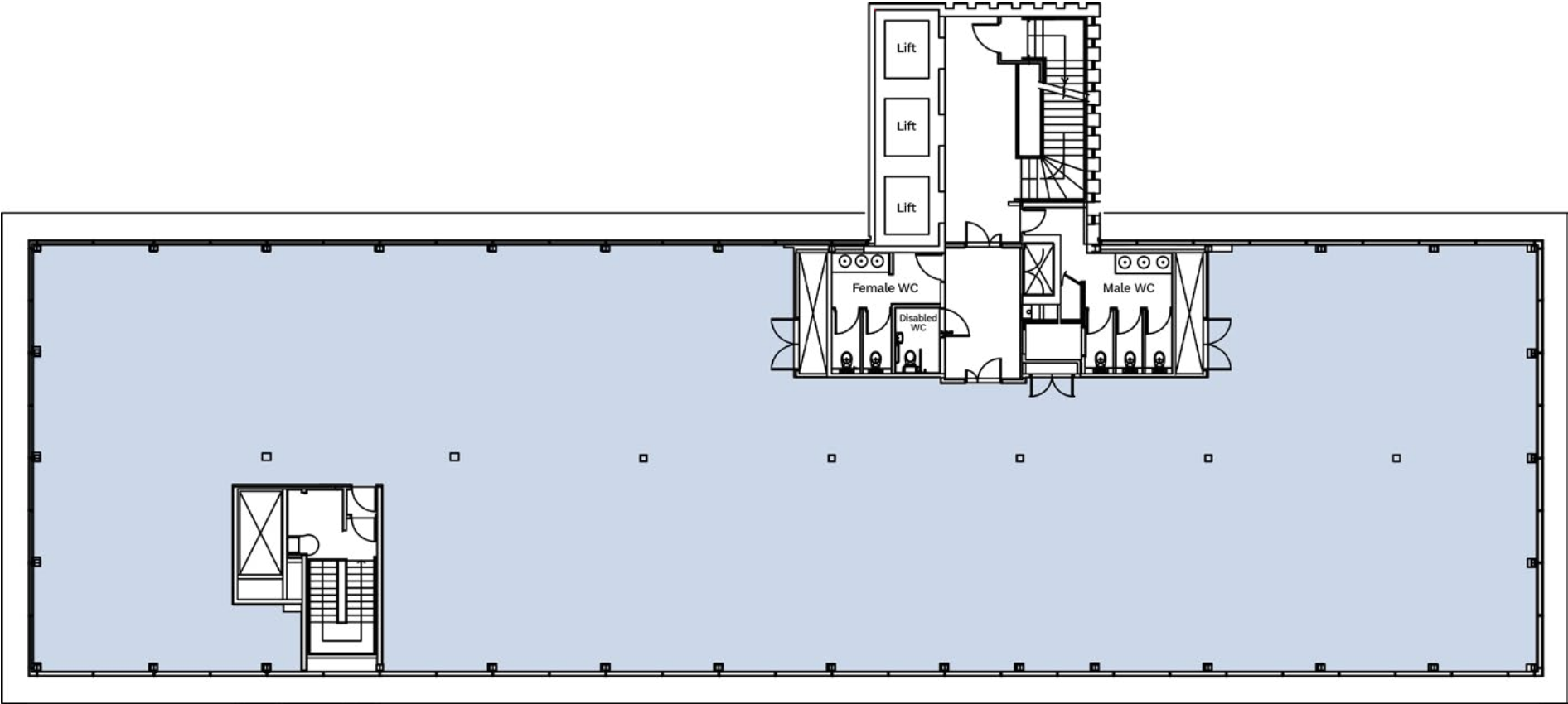
11th Floor

FLOOR	AVAILABILITY	
11 (part)	2,725 sqft	253 sqm



12th Floor

FLOOR	AVAILABILITY
12	LET



Work, with an open mind

CBRE

Theo Holmes

Theo.Holmes@cbre.com

07967 802 656



Jonathan Ottewell

JOttewell@savills.com

07972 000 150

onetemplerow.co.uk

1 Temple Row, Birmingham, B2 5LG